



NEMA 4X Continuous Hinge Quick Release Padlockable Extended Cover 6X4X5 Fiberglass-Opaque

By Wiegmann
Catalog # [HW-RHJ60405CHQR](#)

NEMA 4X Continuous Hinge Quick Release Padlockable
Extended Cover 6X4X5 Fiberglass-Opaque

Features

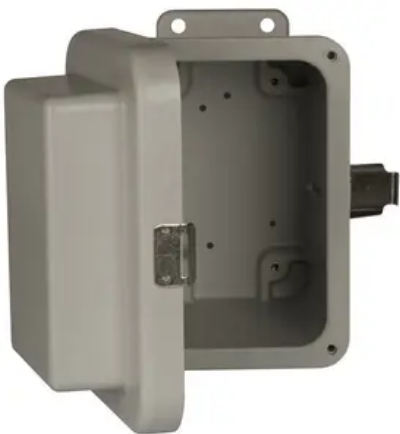
- Constructed of molded fiberglass
- Raised cover with continuous hinge and quick-release padlockable latches
- Poured seamless gasket provides a water-tight and dust-tight seal
- Mounting provisions are provided

General

Catalog Number	HW-RHJ60405CHQR
Color	Gray
Cover Type	Hinged Cover
Material	Fiberglass
Mounting Type	Wall Mount
Series	JIC
Type	Enclosure
UPC	786725877980

Dimensions

Cubic Capacity	120 cu.in
----------------	-----------



*Representative Image

Depth	5 in
Height	6 in
Weight	2.6 lb
Width	4 in

Certifications And Compliance

Buy American Compliant	Contact Manufacturer
Certified Listed	cULus
Nema Rating	4X
UL Listed	Yes

Logistics

Carton Quantity	1
-----------------	---

Product Assets

- [3D Models - HW-RHJ60405CHQR](#)
- [Catalogs - Wiegmann Non-Metallic Enclosures](#)
- [Engineering Drawing - HWDHW-RHJ60405CHQR-S](#)
- [SDS - HCC SDS](#)
- [Specifications - HW-RHJ60405CHQR](#)
- [Terms and Conditions - HCC Terms & Conditions](#)



A Hubbell brand